

Design

The scope mount is available with different heights of construction and inclination. The height of the mount depends on the purpose of use, e.g. using additional equipment in front or behind the scope. The inclination is defined by the used scope.

The assembly will be developed and manufactured in Germany. Its body is manufactured from solid billet aluminium alloy and its surface is anodized matt black.

Reflex sight

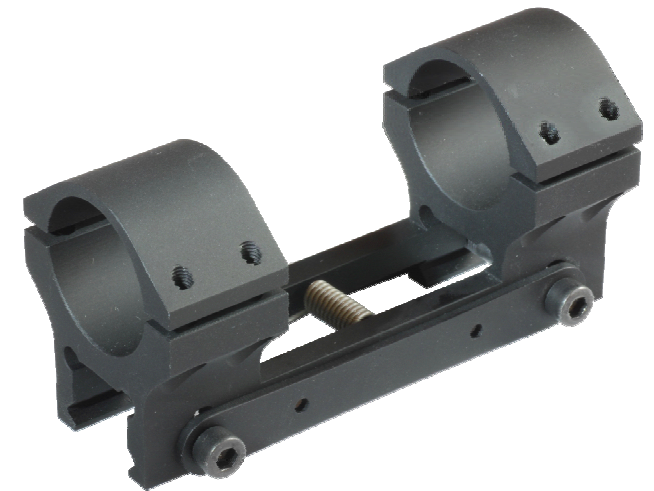
To use a reflex sight in addition to the rifle scope, the upper rings of the scope mount can be exchanged at any time with an adapter to support an Aimpoint Micro, a Doctor Sight II or suchlike, Picatinny rail or adapter for secondary sighting mechanism).

Clamping device

For the clamping at the Picatinny rail, Clamping screw with internal hexagon or with quick clamping lever can be used.

Manz-Mount

The scope mount you can rely on.



Even if you have a standard rail you must not settle for standard precision.

Scope mount

This patented scope mount is a one-piece, centrally clamping sliding device for the Picatinny profile (Mil 1913). Due to the special geometry, the mount achieves the repeat accuracy of a handmade pivot mount or claw mount on a standard Picatinny rail. After the rifle is zeroed, the mount can be detached and attached as often as wanted without any loss of the rifle's zero. This is an advantage, especially, when scope and weapon have to be separated for transport.

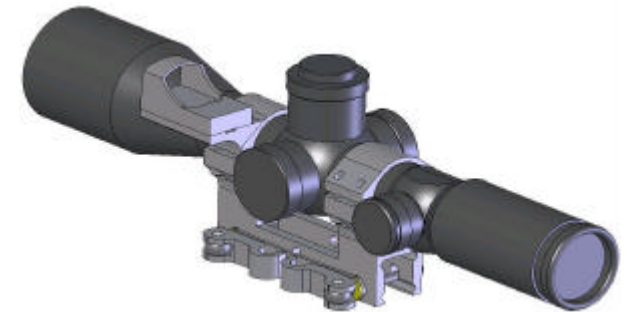
Advantages

- Highest repeat accuracy due to the central clamping
- Simply and quickly attached and detached from the weapon system
- No deviation from point of impact due to different clamping torques of the clamping screws
- Central position of the scope over the bore
- Accurate adaptation for the Picatinny-Profile (Mil 1913)
- Cylindrical recoil lugs prevents edge load for the recoil slots of the Picatinny-Profile
- Suitable for left hand and right hand attachment



Engineering Office Manz

Development and manufacture of scope mounts and accessories for high precision rifles for police, military and the civilian purposes.



Engineering Office Manz

by Georg Manz

Auf der Linde 19
51491 Overath
Deutschland

info@kt-manz.de
<http://www.kt-manz.de>